

It is *imperative* that you know exactly how your car is running on E85 or Gasoline!

Our new data logging device takes the guess work out of your E85 conversion and offers peace of mind.



1

BASE LINE DATA

Enter vehicle make, model, VIN and driver information into the carchip memory. Then Drive on gasoline only for 100 miles and upload the data to our server.

2

**WHITE LIGHTNING
"GASOLINE ONLY"**

Install the white Lightning E85 system and drive on gasoline for 100 miles and upload data to our server.

3

**WHITE LIGHTNING
"E85 ONLY"**

Repeat step 2 using E85 only. We now have a record of how your vehicle operates before the installation and after with both types of fuel.



XPORTECH AUTOMOTIVE INC.
12730 PACIFIC AVENUE SUITE 14A
LOS ANGELES CALIFORNIA
90066
1-800-376-6380



Just plug it in and the CarChip records vital data as you drive.



Plugs instantly and unobtrusively into the OBDII port in your car or truck.

CarChip® Fleet Pro

Simple installation, loads of information.

With CarChip Fleet Pro, installation is as simple as "plug and go." Just plug the tiny data logger into the OBDII on-board diagnostics port and begin recording trip details immediately. Stores all the same driver-performance data as the DriveRight 600E on-board console. Plus, you'll get these CarChip-only features:



New Model!

- GPS & Wireless Compatible
- Increased memory
- Lower price!

- Engine performance monitoring to keep your vehicles in top running condition.
- Diagnostic trouble codes, freeze-frame sensor readings, and the ability to clear the vehicle's check engine light.
- Emissions readiness reports to check the status of the vehicle's smog-control systems.

Engine Performance Monitoring

Monitor any 4 out of 23 possible parameters including:

- RPM
- Throttle position
- Engine load
- Fuel pressure
- Fuel system status
- Short-term fuel trim (2 ea)
- Long-term fuel trim (2 ea)
- Battery voltage
- Timing advance
- Coolant temperature
- Air flow rate
- Intake air temperature
- Intake manifold pressure
- O2 sensor output voltage (8 ea)

To monitor engine performance, use a CarChip Fleet Pro in each vehicle. To monitor driver performance, issue each driver his own CarChip with a unique ID number. Drivers can quickly and easily take their CarChip with them from one vehicle to the next. Stores up to 1200 hours of driving data depending on the logging interval and number of parameters selected. Download at any time and clear the memory, or simply let the newest data overwrite the oldest. Requires Fleet Management Software, sold separately.

8246 CarChip Fleet Pro \$169

Mix and Match DriveRight® 600E & CarChip® Fleet Pro

Our Fleet Management Software accepts data from both the DriveRight 600E on-board console and the CarChip Fleet Pro data logger—so you can mix and match to create the driver safety or vehicle monitoring system you need.

- Choose CarChip Fleet Pro for quickest installation and engine performance monitoring.
- Choose DriveRight 600E for enhanced security and for use in vehicles without OBDII ports.
- Mix and match to suit your needs. Put CarChip Fleet Pro in some vehicles, DriveRight 600E in others.

		CarChip Fleet Pro 8246	DriveRight 600E			
			OBDII 81260BD	VSS 8126VSS	General Duty 8126GD	Heavy Duty 8126HD
Installation Method	Quickest installation. Plugs into the on-board diagnostics port found on cars, vans, and pickup trucks, 1996 and later.*	•	•			
	Uses the vehicle's speed sensor signal. For vehicles 1992 and later, and some earlier model-years with cruise control.			•		
	Mounts next to driveshaft or CV joint. For tractors, big rigs, and buses, and for older-model cars, vans, and pickup trucks.				•	•
On-Board Feedback	Interactive console gives instant feedback to drivers during and after each trip.		•	•	•	•
	On-board alarms alert the driver to excessive speed, acceleration, or deceleration.	•	•	•	•	•
Download to Software	Download directly to PC via USB or serial port.	•	•	•	•	•
	Transmit wirelessly from parking lot to office with optional wireless download system.	•	•	•	•	•
	Add other download options: SmartCard, Palm Pilot, or via modem using Remote Download Kit.		•	•	•	•
Other Features	Monitor engine performance, view diagnostic trouble codes, and reset check engine light.	•				
	Monitor seatbelt and headlight usage with optional digital inputs.		•	•	•	•
	Enhanced security options include driver ID and optional Starter Interrupter Kit.		•	•	•	•

* If outside the USA and Canada, see our note for international customers on page 15.

Fuel mileage, Emissions, Check Engine Lights, Oxygen Sensors and much more can now be carefully monitored and seen in real time.

Fleet Management Software

FOR CARCHIP FLEET PRO and DRIVERIGHT 600E

The info you need to manage your fleet—where you need it, when you need it.



Download the data from CarChip Fleet Pro and DriveRight 600E, and you'll have all the information you need to give feedback to your drivers, make decisions about performance, and report back to top management. Our Fleet Management Software lets you track and compare drivers and vehicles in summary or detail form, for your entire fleet or just selected groups. See the following pages for a detailed look at just some of the available reports. You can also use the software to:

- **Set vehicle or driver IDs** for CarChip Fleet Pro data loggers and DriveRight 600E on-board consoles.
- **Set the unit of measure** for speed and distance (miles or kilometers) and the format for time and date (U.S. or international).
- **Set multiple levels of corporate structure** for reporting purposes.
- **Set onboard safety alarms** for speed, acceleration, and hard braking.
- **View security reports** showing unsuccessful login or security code attempts and the times and dates the units were disconnected.
- **For CarChip Fleet Pro**, select engine monitoring parameters and logging interval, and reset the check engine light.
- **For DriveRight 600E**, require SmartCard use or set alarms to remind drivers to login manually before each trip.
- **With optional GPS system**, see the routes your drivers took, the speeds they drove, and the location of any accidents or near-accidents.

Multiple download options offer ultimate flexibility.

We know that different fleets have different needs. Whether you manage a fleet of a dozen vehicles in a single location or hundreds of vehicles across the globe, our data-download options give you the flexibility you need to download data quickly and easily. See the following pages for more details on each.

Download Option		CarChip Fleet Pro	DriveRight 600E
Serial Port	In the office, download directly from console to PC via serial port. Page 9.		•
USB	For CarChip, download directly to PC via the USB cable. For DriveRight, add our optional USB-to-Serial cable. Page 9.	•	•
Modem	Download the console from remote locations to your central office via modem using our Remote Download Kit. Page 11.		•
Palm Pilot	In the field, download data from multiple consoles into a single Palm Pilot. Page 11.		•
SmartCard	Issue a credit-card sized SmartCard to each driver; then use to both authorize the driver and download driving data. Page 13.		•
Wireless	Transmit wirelessly from parking lot to office. Query the vehicles whenever you like, or set up to download automatically. Page 12.	•	•

An E.C.M. is a very powerful device. With CarChip you have the ability to safely explore exactly what your vehicles computer sees.

Driver Safety Score

Ranks driver safety performance using a single concise score. You choose the factors you want to include in the safety score and how much to weigh each.

For CarChip Fleet Pro and DriveRight 600E

- Choose detailed or summary report.
- Select starting and ending dates.
- Sort by current score, cumulative score, or driver name.

Compare current and cumulative safety scores to see how drivers are doing over time.

Weigh each factor appropriately by changing the safety score formula as needed.

Driver	Current Score	Cumulative Score	Max. Downshift	Total Distance Driven (Miles)	Accel Counts per 100 Miles	Decel Counts per 100 Miles	Maximum Speed (MPH)	Vehicle Speed Limit (MPH)	% of Driving Time over Threshold	Accel	Decel	Overload	Speed
10 Ruff, Larson	95	99	11	3417.0	6	9.3	72	70	0	100	99	100	88
11 Steffy, Vinyague	94	100	10	3313.9	6	9	70	70	0	100	100	100	88
12 Top, Jantz	94	90	5	2217.4	6	4.3	73	70	0	99	100	100	100
13 Dubovay, Sledge	94	90	10	4706.8	6.1	9.3	70	70	0	100	100	100	80
14 Jett, Nantel	90	92	9	2293.1	6	9	76	70	0	100	100	100	78
16 Michael, Jan	91	91	10	3000.3	6.1	9.3	70	70	0	100	100	100	78
17 Bernie, Woodcock	91	99	10	3000.3	6.1	9.3	70	70	0	100	100	100	78
18 Mike, Ito	90	90	10	3000.3	6.1	9.3	70	70	0	100	100	100	78
19 Paul, Vignone	90	90	10	3000.3	6.1	9.3	70	70	0	100	100	100	78
20 Edward, Michalski	84	84	10	3000.3	6.1	9.3	70	70	0.1	100	97	100	61
21 Jerry, Debonnet	81	81	10	3000.3	6.1	9.3	70	70	0	90	90	100	63
22 Ed, Buchhalter	74	74	10	3000.3	6.1	9.3	70	70	0	100	99	100	62
23 Ray, Rogers	73	73	10	3000.3	6.1	9.3	70	70	0	90	90	100	64
24 Clay, Cohen	73	73	10	3000.3	6.1	9.3	70	70	0.2	90	90	100	67
26 Jeff, Alexander	73	73	10	3000.3	6.1	9.3	70	70	0	100	99	100	66
28 Michael, Vogt	73	73	10	3000.3	6.1	9.3	70	70	0	90	100	100	66
27 James, Gillman	73	73	10	3000.3	6.1	9.3	70	70	0	90	100	100	66
28 Bob, King	71	71	10	3000.3	6.1	9.3	70	70	0	90	97	100	61
29 Steve, Chakrapan	71	71	10	3000.3	6.1	9.3	70	70	0.1	90	97	100	66
40 David, Dunninger	70	70	10	4745.7	6.1	9.3	80	70	0	100	100	100	65
11 Helen, Langrish	68	68	10	2556.4	6.1	9.3	80	70	0	90	100	100	60
37 WT, AM Color Range	64	64	7	393.6	6	9.3	80	70	0	100	100	100	64
33 David, Chadwick	63	63	10	4294.7	6	9.3	80	70	0	100	100	100	64

Actual screens may vary.

Compare the driver's top speed with your company's established speed safety limit.

View only those drivers who exceeded your selected criteria.

Determine the appropriate action by reviewing how much time was spent over the limit.

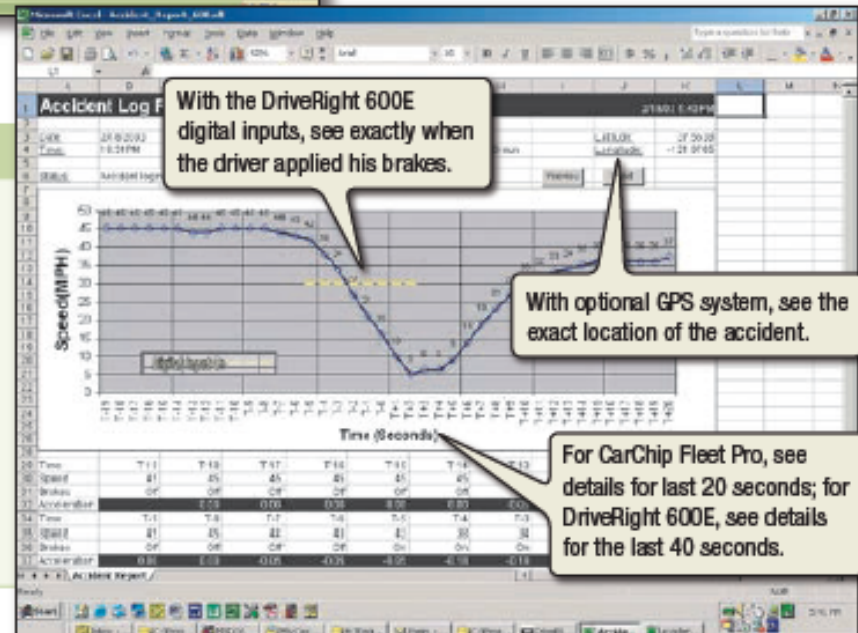
Driver ID	Driver Name	Trip Starting Date	Trip Starting Time	Trip Top Speed (MPH)	Vehicle ID	License Plate	Time Over Speed	DriveRight Speed Limit (MPH)
SP03	Bob Deuchat	10/06/00	11:31 AM	75	6	SLM9499	00:00:11	73
SP03	Bob Deuchat	11/13/00	08:49 AM	75	6	SLM9499	00:00:20	73
SP03	Bob Deuchat	12/04/00	11:13 AM	77	6	SLM9499	00:00:27	73
SP03	Bob Deuchat	12/06/00	11:31 AM	79	6	SLM9499	00:00:11	73
SP03	Bob Deuchat	12/06/00	08:49 AM	75	6	SLM9499	00:00:30	73
SP03	Bob Deuchat	01/03/01	11:31 AM	77	6	SLM9499	00:00:37	73
SP03	Bob Deuchat	01/03/01	08:49 AM	78	6	SLM9499	00:00:37	73
SP03	Bob Deuchat	01/03/01	11:31 AM	78	6	SLM9499	00:00:11	73
SP03	Bob Deuchat	01/03/01	08:49 AM	75	6	SLM9499	00:00:22	73
SP03	Bob Deuchat	01/03/01	11:31 AM	73	6	SLM9499	00:00:32	73
SP03	Bob Deuchat	07/06/04	11:31 AM	77	6	SLM9499	00:00:27	73
SP03	Bob Deuchat	08/13/04	08:49 AM	78	6	SLM9499	00:00:11	73
SP03	Bob Deuchat	03/09/04	11:31 AM	78	6	SLM9499	00:00:32	73
SP03	Bob Deuchat	03/09/04	08:49 AM	77	6	SLM9499	00:00:27	73
SP03	Bob Deuchat	11/13/00	08:49 AM	79	6	SLM9499	00:00:11	73
SP03	Bob Deuchat	12/04/00	11:31 AM	75	6	SLM9499	00:00:30	73
SP03	Bob Deuchat	12/06/00	11:31 AM	77	6	SLM9499	00:00:27	73

Accident Log

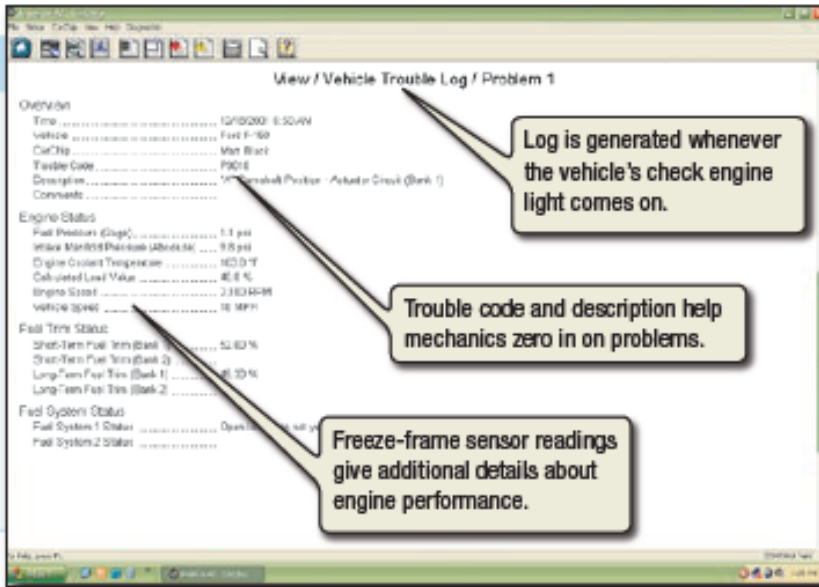
Whether the driver slammed on the brakes or hit an unmovable barrier, now you can get the detailed, moment-by-moment information needed to help reconstruct the accident.

For CarChip Fleet Pro and DriveRight 600E

- Select specific CarChip or DriveRight ID and date.
- Output to the included Excel template to view in graphic format.
- View using Microsoft MapPoint or other third-party mapping software with optional GPS system.



Graphs and Tables of MPH, RPM, Timing, Temperature and Fuel Controls. You can pin point Trouble Codes at the moment they occur.



Diagnostic Trouble Codes

Helps take the guesswork out of diagnosing engine problems. Unlocks the information stored by a vehicle's engine control unit whenever there's an emissions problem or sensor failure.

For CarChip Fleet Pro

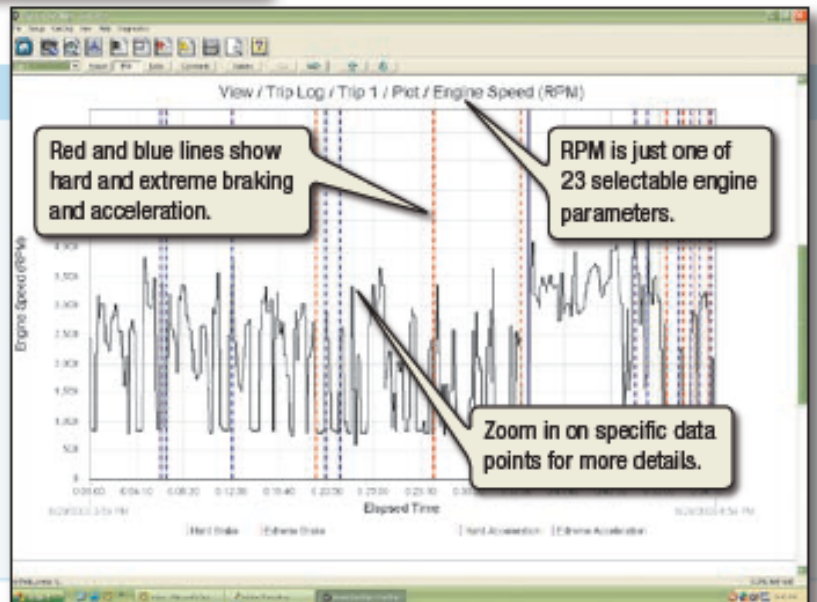
- Read the diagnostic trouble code whenever the check engine (or malfunction indicator) light comes on.
- Get detailed "freeze-frame" sensor readings—a snapshot of what was happening at the time.
- Clear the check engine light yourself.

Engine Monitoring

Lets you see how your vehicles are performing under real-life driving conditions, not just when they're in the shop. Log any 4 out of 23 parameters at a time, at intervals from 5 to 60 seconds.

For CarChip Fleet Pro

- RPM
- Throttle position
- Engine load
- Fuel pressure
- Fuel system status
- Short-term fuel trim (2 ea)
- Long-term fuel trim (2 ea)
- Battery voltage
- Timing advance
- Coolant temperature
- Air flow rate
- Intake air temperature
- Intake manifold pressure
- Oxygen sensor output voltage (8 ea)



Monitor	Supported	Status
Catalyst	Supported	Complete
Heated Catalyst	Not Supported	-----
Evaporative System	Supported	Complete
Secondary Air System	Not Supported	-----
A/C System Refrigerant	Not Supported	-----
Oxygen Sensor	Supported	Complete
Oxygen Sensor Heater	Supported	Complete
EGR System	Not Supported	-----
Misfire Monitoring	Supported	Complete
Fuel System Monitor	Supported	Complete
Comprehensive Monitor	Supported	Complete

Emissions Readiness

Shows which emissions control systems have been tested by the vehicle's OBDII system. You'll know whether or not a vehicle will pass a smog test and can take action to keep it in top running condition.

For CarChip Fleet Pro

- Misfire, fuel trim, and comprehensive component monitors are found in all OBDII-compliant vehicles.
- Other system monitors vary depending on manufacturer, make, and model.
- Some systems are monitored continuously; others only when certain operating conditions are met.

Usage Report

Lets you see how much your vehicles are being driven, and when. Use to reimburse employees for business driving, to charge back personal use of company vehicles, or to monitor driving outside of authorized hours.

For CarChip Fleet Pro and DriveRight 600E

- Display distance in miles or kilometers.
- Select starting and ending dates, and print for all or selected drivers or vehicles.
- Sort by driver name, total mileage, or weekend or nighttime mileage.

Set or change the definitions for "weekends" and "nights" as needed.

See what percentage of total mileage occurs on weekends and nights.

Enter trip type on DriveRight 600E console, and see business, personal, commute, or other mileage.

Driver	Mileage (Miles)	Average Monthly Mileage	Miles per Month	Weekend Driving Mileage		Night Driving Mileage		Mileage by Trip							
				BC	NC	BC	NC	Business	NC	Personal	NC	Commuter	NC	Other	NC
Debbie	358	383	61	6	169	80	142	85	0	0	152	69	33	4	
Jeff	919	306	227	24	273	80	259	82	0	0	156	39	4	0	
Tyrene	759	253	34	4	159	80	200	35	2	0	150	63	34	4	
Christie	642	226	132	28	123	89	211	43	6	2	215	33	14	0	
David	474	158	86	8	77	83	123	22	263	44	114	22	32	5	
Tara	372	125	241	31	55	25	245	62	4	1	122	32	3	0	
Don	297	99	73	26	4	84	28	9	39	11	120	29	9	2	
Jan	221	74	107	47	30	47	30	33	14	0	10	39	25	15	
Carol	48	16	2	1	1	80	27	54	0	0	13	32	3	0	
Hecky	17	6	1	1	1	52	4	25	0	0	3	17	9	52	

Fleet Management Software System Requirements

- Windows 98SE, ME, NT 4.0, XP, 2000, or Vista

Works with

- MS Excel. Use our included templates or create your own reports from tab-delimited text files.
- MS Outlook. Place the report in the body of the e-mail if HTML-enabled, or send as an Excel attachment.
- MS MapPoint or other third-party mapping software. Use with our GPS Module to see how and where your vehicles are being driven.
- FTP Client/Server. For secure transfer of large amounts of data from remote sites via the Internet.

Runs on Multiple Database Platforms

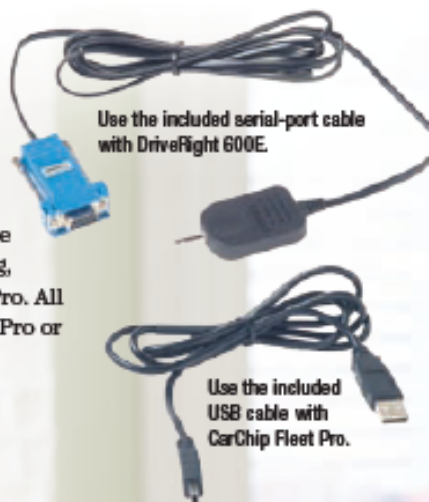
- For smaller fleets, includes Microsoft Access and MSDE databases; no additional software or licenses required.
- For larger fleets, use with MySQL, MS SQL Server, or Oracle.

Fleet Management Software

FOR CARCHIP FLEET PRO and DRIVERIGHT 600E

Includes software on CD, serial-port cable for downloading from the DriveRight 600E on-board console, and USB cable for downloading from CarChip Fleet Pro. For easy, automatic downloading, add the wireless download system shown on page 12. Data from DriveRight 600E may also be downloaded using the optional USB-to-Serial Cable shown below, the Palm or Remote Download Kits shown on page 11, or the SmartCard System shown on page 13. Reports for diagnostic trouble codes, engine monitoring, and emissions readiness require the use of CarChip Fleet Pro. All other reports are available whether you use CarChip Fleet Pro or any of our DriveRight 600E models.

8186 Fleet Management Software \$395



USB-to-Serial Cable

Optional cable. Use with DriveRight 600E to connect the included serial-port cable to the USB port on your PC.

8434 USB-to-Serial Cable \$20



Easy as 1 2 3, the CarChip is a read-only device and will not disrupt or Harm your Vehicles E.C.M.

Warranty

We warrant our products to be free of defects in material and workmanship for one year from the date of original purchase. While we make every effort to carefully manufacture our products to the highest standards of quality, occasionally parts may be found to be missing, defective, or damaged.

If you have a defective part, return the product to us, shipping charges prepaid. Include proof of purchase and a written explanation of the trouble. During the warranty period, we will, at our option, either repair or replace the product free of charge. This warranty does not cover damage due to improper installation or use, negligence, accident, or unauthorized service, or to incidental or consequential damages beyond the Davis products themselves. Implied warranties are limited in duration to the life of this limited warranty.

Some states do not allow limitations on how long an implied warranty lasts, or the exclusion or limitation of incidental or consequential damages, so the above limitations may not apply to you. This warranty gives you specific legal rights. You may have other rights, which vary from state to state and country to country.

Important Safety Notice

CarChip and DriveRight OBD have been carefully designed and tested to comply with the OBDII protocols used on vehicles sold in the USA, model-year 1996 or later. However, some vehicle models are not in full compliance with these protocols. In addition, the computer control systems on any given vehicle may be malfunctioning or out of spec, as may be the sensors used by these systems.

Before installing CarChip or DriveRight OBD, be sure to review the list of known exclusions on our website at www.carchip.com, where you'll also find the latest software and firmware downloads. For an in-depth discussion of OBDII anomalies, we recommend The Equipment and Tool Institute's website at www.etools.org.

While our testing and the experience of thousands of CarChip and DriveRight OBD users have shown the units to be safe and reliable, there is an inherent risk in adding any aftermarket product that may potentially affect the operation or drivability of your vehicle. Should you be concerned about the operation of your vehicle at any time while using any of our products, you should pull over, off the roadway, immediately or as soon as it is safe to do so. Remove the unit from the OBDII port, and consult a licensed mechanic or automobile service center.

Report any issues or concerns to our Technical Support Department at (510) 732-7814 or support@davisnet.com. We are open Monday through Friday, 7:00 a.m. to 5:30 p.m. Pacific Time. We maintain an active database of the feedback we receive, and your comments can help us continuously improve the product.

Installation Diagrams

FOR CARCHIP FLEET PRO and DRIVERIGHT 600E

<h3>CarChip Fleet Pro</h3> <p>1 Locate the OBDII port in your vehicle</p> <p>2 Plug the CarChip data logger in</p> <p>3 Make sure the indicator light is blinking</p> <p>Fig.1</p>	<h3>DriveRight 600E OBDII Installation</h3> <p>Figure 1 is the only Data Logger we recommend for the D.I.Y.</p> <p>Others shown here are for more elaborate Fleet vehicles.</p> <p>Connect to OBDII port</p>
<h3>DriveRight 600E General Duty/Heavy Duty</h3> <p>Optional wiring for seatbelt and headlight monitoring</p> <p>Digital Inputs 1, 2, Ground</p> <p>Unswitched +12V, Ground</p> <p>Sensor, Magnet Assembly</p> <p>Vehicle Driveshaft or CV Joint Hub</p>	<h3>DriveRight 600E VSS Installation</h3> <p>Optional wiring for seatbelt and headlight monitoring</p> <p>Digital Inputs 1, 2, Ground</p> <p>Unswitched +12V, Ground</p> <p>VSS, Vehicle Speed Sensor Wire</p>
<h3>Wireless Download System</h3> <p>USB Port, Configuration Cable, On-Board Module (connected to PC for configuration before installation in vehicle), Base Station</p>	<h3>DriveRight 600E with Optional Components</h3> <p>Wireless On-Board Module, GPS Module, DriveRight Console, GPS/Wireless Interface Module, SmartCard Reader</p>

It was the CarChip Data logger that allowed our company such great success in the E85 industry. This is the best diagnostic tool you will ever own!

Feature Comparisons

FOR CARCHIP FLEET PRO and DRIVERIGHT 600E

		8246 & 8186	8126 & 8186	
		CarChip Fleet Pro with Fleet Management Software	DriveRight 600E with Fleet Management Software	
FEATURES & OPTIONS	List Price	Data logger or on-board display console	\$169	\$375-395
		Software (requires just one software package per fleet)	\$395	\$395
	Installation	Installs using	OBDII connector	OBDII, VSS, driveshaft, or CV joint
		For model years	1996 and later	Any
		For cars, vans, and pickup trucks	●	●
		For tractors, big rigs or other large trucks, and buses		●
		Professional installation recommended (for GD, HD, or VSS)		●
		Estimated installation time	15 seconds	10 min (OBD) to 1-2 hrs (GD, HD, VSS)
	Download to Computer	Using Included USB cable	●	
		Using the included serial-port cable or optional USB cable		●
		Wireless using optional system (additional \$450)	●	●
		Via modem using optional Remote Download Kit (additional \$95)		●
		Via Palm Pilot using optional Palm Download Kit (additional \$95)		●
		Via SmartCard using optional system (additional \$280)		●
	Backup Battery	Battery type	Internal	3-volt lithium
Expected battery life if unit not in vehicle		10-15 years	2-4 months	
Expected battery life under normal usage		10-15 years	3-5 years	
DRIVER PERFORMANCE	Acceleration & Deceleration	Hard accelerations	●	●
		Hard decelerations	●	●
		On-board alarms for hard accelerations and decelerations	●	●
	Accident Log	After hard deceleration, speed every second for the last 20 seconds before a complete stop.	●	
		Speed every second for 20 seconds before and 20 seconds after hard deceleration.		●
	Distance	Distance traveled per trip	●	●
	GPS	Optional GPS position logging (additional \$165)	●	●
	Trip Time	Starting and ending time for each trip	●	●
		Total elapsed time for each trip	●	●
		Engine idle time	●	
		Weekend/night driving time	●	●
	Trip Type	Specify trip type using on-board console		●
	Speed	Top speed	●	●
		Average speed	●	●
		Time over safety limit for speed	●	●
Time within user-specified speed ranges		●		
On-board alarm for high speed		●	●	
Seatbelt Use	If selected as one of two digital inputs		●	
ENGINE	Diagnostic trouble code with "freeze-frame" sensor readings	●		
	Ability to reset "check engine" light	●		
	Logging of user-selectable engine parameters (see list on page 4)	●		
SECURITY	Security code to change settings on on-board console		●	
	Driver ID code and vehicle login restrictions		●	
	Tamper indicator shows on on-board console		●	
	Tamper log may be viewed in software	●	●	

Here's what people are saying about CarChip and DriveRight:

When my drivers saw how they were breaking the law, it woke some of them up. CarChip has helped us to remind them that sometimes you forget how fast you are really driving.

Roadside Assistance, Arizona

In the first year of using DriveRight, our company achieved its goal. Over the two-year period, corporate officials reported zero accidents.

Fleet Operations Manager, Algeria

It's not an exaggeration to say that for this project, CarChip provided a more reliable and cost-effective means to obtain vehicle operating data than any other approaches that we know.

Air Pollution Researcher, California

Recently had a customer ring me about an incident involving one of their motor vehicles. Using information from their DriveRight 600, I was able to redirect their culpability of involvement. The cost of the DriveRight was repaid just on this occasion alone.

Driver Training, Australia

CarChip is a simple tool every fleet manager can use. Ever since we began using it and informing drivers that their vehicle "may" have a vehicle data recorder installed, citizen complaints have decreased.

University Fleet Manager, Nebraska

A note for our international customers.

OBDII on-board diagnostics became mandatory for all cars, pickups, and vans manufactured for sale in the U.S. and Canada beginning with model-year 1996. Many vehicles manufactured for sale elsewhere are also OBDII-compliant, and CarChip Fleet Pro and the OBD version of DriveRight 600E will work with these vehicles as well. However, there is no easy way to tell which are OBDII-compliant and which are not, even if the vehicle appears to have the proper connector. If you want to use CarChip Fleet Pro or the OBD version of DriveRight 600E, we suggest that you purchase a sample unit and test it in your fleet before committing to a larger purchase.

Hours of data varies depending on the logging interval. GPS logging requires optional components.	LOGGING INTERVAL			HOURS OF DATA
	Speed	GPS Location	Engine Parameters	
CARCHIP FLEET PRO	1 second	1 second	5 seconds	24 hours
	5 seconds	60 seconds	60 seconds	520 hours
	5 seconds	Not logged	Not logged	1200 hours
DRIVERIGHT 600E *	1 second	1 second	n/a	1 hour
	30 seconds	30 seconds	n/a	30 hours
	15 minutes	15 minutes	n/a	650 hours

* For DriveRight 600E, the hours of speed data stored does not vary whether or not GPS location data is stored. DriveRight 600E also stores data for up to 600 trips in a separate trip log. Each trip log includes starting and ending time and data, distance, top speed, average speed, and more. Engine parameter logging is not available with DriveRight 600E; to log these, use CarChip Fleet Pro. Details, specifications, and prices are subject to change at any time without notice.